

## Oracle E-Business Suite R12.1 Receivables Essentials 1Z0-518 Dumps With VCE and PDF Download (Question 49 - Question 56)

PassLeader now are offering 100% pass ensure 1Z0-518 dumps! All 1Z0-518 exam questions have been updated with correct answers, welcome to download the newest PassLeader 1Z0-518 VCE dumps and PDF dumps:

<https://www.passleader.com/1z0-518.html> (101 Q&As)

BTW: Download PassLeader 1Z0-518 dumps from Google Drive for free:

[https://drive.google.com/open?id=0B-ob6L\\_QjGLpQVhkMjdZV0NtN1E](https://drive.google.com/open?id=0B-ob6L_QjGLpQVhkMjdZV0NtN1E)

### QUESTION 49

A Global Single Instance (GSI) provides global enterprise with a single, complete data model. Identify three features in Oracle E-Business Suite Release 12 that support a GSI. (Choose three.)

- A. maintenance of third-party applications
- B. automation of standardized documents and audit processor
- C. decentralization of operations by regions, division, or process
- D. consolidation of data center and lowering administrator overhead
- E. capture of statutory and customary local requirement in the same database

Answer: BDE

### QUESTION 50

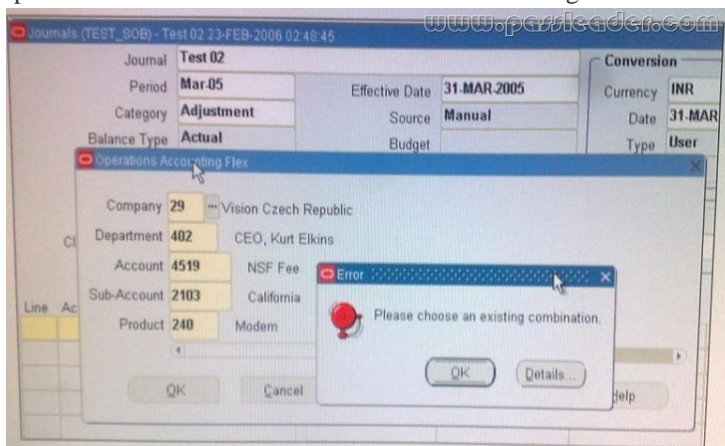
XYZ Corp. has acquired ABC Corp. XYZ operates with Multi-Org Access Control. Consequently XYZ Corp. needs to add additional Operating Units. Identify the statement that describes the sequence for adding additional Operating Units.

- A. It is not possible to add additional Operating Units.
- B. Set the MO: Operating Unit profile option, run the Replicate Seed Data concurrent request, create the Operating Unit, and create new responsibilities as necessary.
- C. Set the MO: Security Profile profile option, run the Replicate Seed Data concurrent request, create the Operating Unit, and create new responsibilities as necessary.
- D. Create the Operating Unit, run the Replicate Seed Data concurrent request, create new responsibilities as necessary, and set up the MO: Default Operating Unit profile option.
- E. Create the Operating Unit, run the Replicate Seed Data concurrent request, assign the Operating Unit to a security hierarchy, run Security List maintenance concurrent program, create new responsibilities as necessary, and set up the MO: Security Profile profile option.

Answer: E

### QUESTION 51

Referring to the Exhibit. While entering a journal in the Journals form, you enter a code combination of 29.402.4519.2103.240 in the five-segment Accounting Flexfield. However, you are unable to proceed after entering this account combination. What could be the problem in the structure definition of the Accounting Flexfield?



- A. The "Freeze Rollup Groups" check box is selected.
- B. The "Allow Dynamic Inserts" check box is deselected.
- C. The "Freeze Flexfield Definition" check box is selected.
- D. The "Cross-Validate Segments" check box is selected.

Answer: B

#### QUESTION 52

Identify two options that users can specify using Multi-Org preferences. (Choose two.)

- A. set up the default Operating Unit
- B. set up frequently accessed responsibilities
- C. set up date, currency, and number formats
- D. set up frequently accessed forms and webpages
- E. set up the access to a limited list of Operating Units

Answer: AE

#### QUESTION 53

Identify the two benefits of using Multi-Org Access Control. (Choose two.)

- A. View asset information across multiple asset books.
- B. Restrict access to users based on their Quantization assignments.
- C. Submit and view data across different Ledgers using a single responsibility.
- D. Enter Payables invoices for different Operating Units using a single responsibility.
- E. View Consolidated requisitions across Operating Units using a single responsibility.

Answer: DE

#### QUESTION 54

Identify the two benefits of using Multi-Org Access Control. (Choose two.)

- A. View asset information across multiple asset books.
- B. Restrict access to users based on their Organization assignments.
- C. Submit and view data across different Ledgers using a single responsibility.
- D. Enter Payables invoices for different Operating Units using a single responsibility.
- E. View Consolidated requisitions across Operating Units using a single responsibility.

Answer: DE

Explanation:

<http://realworldoracleapps.blogspot.com/2009/02/r12-multi-org-access-control-features.html>

#### QUESTION 55

You are involved in a project to upgrade to Oracle E-Business Suite, Release 12. You need more information about the upgrade processes and paths. Where would you find the upgrade guide for Oracle E-Business Suite?

- A. AppsNet
- B. Bug Database
- C. Technical Forums
- D. Meta Link Knowledge Base
- E. Oracle Technology Network
- F. Customer Knowledge Exchange

Answer: D

#### QUESTION 56

Which two statements are true regarding partitioning of data by an application? (Choose two.)

- A. General Ledger is partitioned by Ledgers.
- B. Accounts Payable is partitioned by Ledgers.
- C. Fixed Assets are partitioned by Operating Unit.
- D. Accounts Receivable is partitioned by Operating Unit.
- E. Order Management is partitioned by Inventory Organization.

Answer: AD

Explanation:

[http://oracleappsuserguide.blogspot.com/2009/06/oracle-r12-business-essentials-faqs\\_10.html](http://oracleappsuserguide.blogspot.com/2009/06/oracle-r12-business-essentials-faqs_10.html)

PassLeader now are offering 100% pass ensure 1Z0-518 dumps! All 1Z0-518 exam questions have been updated with correct answers, welcome to download the newest PassLeader 1Z0-518 VCE dumps and PDF dumps:

<https://www.passleader.com/1z0-518.html> (101 Q&As)

BTW: Download PassLeader 1Z0-518 dumps from Google Drive for free:

[https://drive.google.com/open?id=0B-ob6L\\_QjGLpQVhkMjdZV0NtN1E](https://drive.google.com/open?id=0B-ob6L_QjGLpQVhkMjdZV0NtN1E)